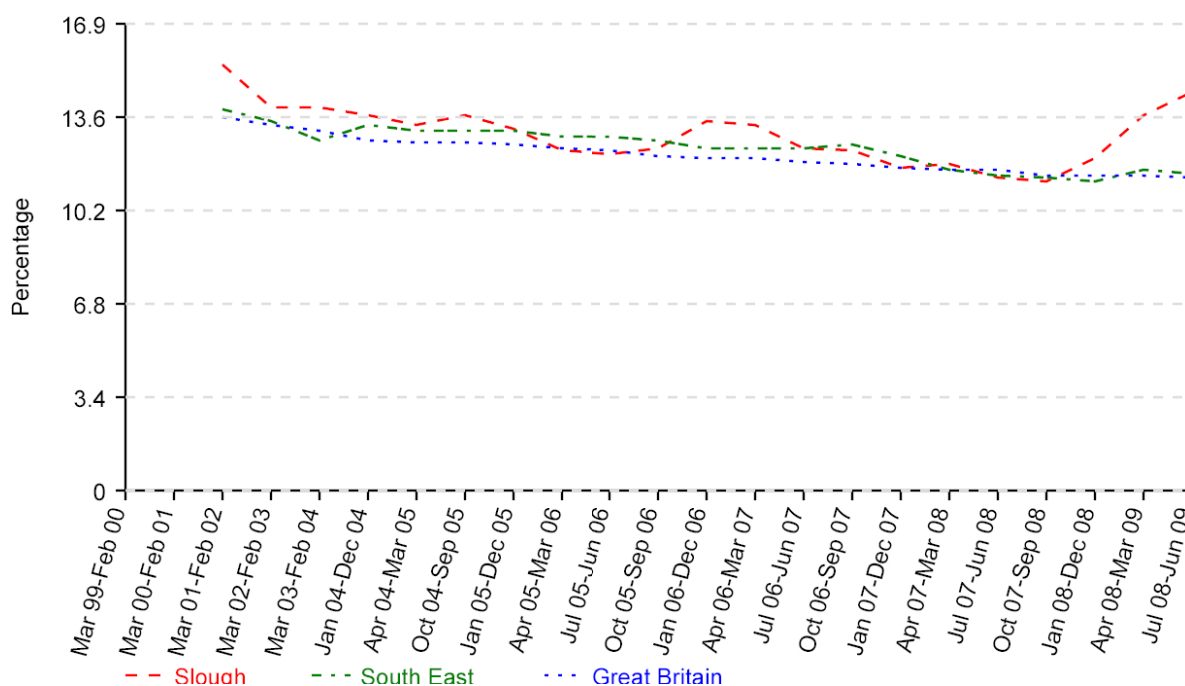


nomis official labour market statistics

4 Administrative & secretarial Slough



Date	Slough	Slough (%)	South East (%)	Great Britain (%)
Mar 99-Feb 00	-	-	-	-
Mar 00-Feb 01	-	-	-	-
Mar 01-Feb 02	9,000	15.4	13.8	13.5
Mar 02-Feb 03	8,000	13.9	13.4	13.2
Mar 03-Feb 04	8,000	13.9	12.7	13.0
Jan 04-Dec 04	8,100	13.6	13.2	12.7
Apr 04-Mar 05	7,900	13.2	13.0	12.6
Oct 04-Sep 05	8,200	13.6	13.0	12.6
Jan 05-Dec 05	7,800	13.1	13.0	12.5
Apr 05-Mar 06	7,200	12.3	12.8	12.4
Jul 05-Jun 06	7,200	12.2	12.8	12.3
Oct 05-Sep 06	7,400	12.4	12.7	12.1
Jan 06-Dec 06	8,000	13.4	12.4	12.0
Apr 06-Mar 07	7,800	13.2	12.4	12.0
Jul 06-Jun 07	7,400	12.4	12.4	11.9
Oct 06-Sep 07	7,200	12.3	12.5	11.8
Jan 07-Dec 07	6,800	11.7	12.1	11.7
Apr 07-Mar 08	6,800	11.8	11.6	11.6
Jul 07-Jun 08	6,600	11.3	11.4	11.6
Oct 07-Sep 08	6,600	11.2	11.3	11.4
Jan 08-Dec 08	7,000	12.0	11.2	11.4
Apr 08-Mar 09	8,000	13.6	11.6	11.4
Jul 08-Jun 09	8,300	14.4	11.5	11.3

Source: ONS annual population survey

- The sample size is too small to allow Labour Force Survey data to be produced

Notes: Numbers and % are for those of 16+

% is a proportion of all persons in employment

Data prior to the period Jan 05 - Dec 05 has not been reweighted in line with the latest ONS estimates. This will be done as soon as possible. For further details goto <https://www.nomisweb.co.uk/articles/424.aspx>

Copyright

This material is Crown Copyright. Users are granted permission to reproduce Crown Copyright material provided that a Click-Use Licence has been obtained from HMSO. The Click-Use Licence can be obtained from www.click-use.hmso.gov.uk. When reproducing this material, copyright and source should be acknowledged.